

VERV



18/80 Henty Street Braddon ACT

3 🛏 2 🚿 2 🚗

This north-facing, light-filled and generously proportioned ground floor apartment is a rare find. Ideally positioned on the edge of the Braddon cafe and entertainment precinct, with just a short stroll to the CBD and the light rail on Northbourne, the apartment offers convenient and comfortable inner-city living.

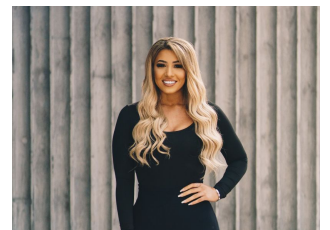
As you enter this stunning apartment, you will immediately appreciate its spacious layout. Boasting two large north-facing living areas with an open-plan design and access to a spectacular 59m² alfresco courtyard, the space is perfect for relaxing and entertaining family and friends. Nestled at the rear of the boutique 'Element' complex, and surrounded by leafy, mature gardens, the apartment is quiet and secluded.

Unit 18 offers three generous bedrooms, two bathrooms,

Price : \$ 1,045,000
Building Size : 115 sqm
View : <https://www.vervproperty.com/sale/act/inner-north/braddon/residential/apartment/6837904>



Jason Roses
02 6176 3476



Elizabeth Da Pozzo
02 6176 3476

