

# VERV



**221/24 Lonsdale Street Braddon ACT**

2  1  1 

This gorgeously appointed apartment is positioned in the heart of Lonsdale Street in the beautiful MODE 3 building. Offering breathtaking views of Mt Ainslie from a massive, full-width east-facing terrace.

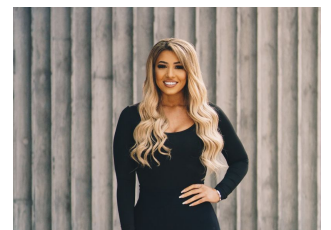
This impressive two-bedroom apartment has been freshly painted throughout and is set over an impressive 71m<sup>2</sup> of light filled and generous internal living space and an additional 23m<sup>2</sup> of covered outdoor terrace. The designer kitchen with island benchtop features quality stainless-steel appliances, tiled splashback, SMEG dishwasher, soft close drawers and Caesarstone benches.

The additional second bedroom/study with integrated desk is an ideal home office or spare room. The modern bathroom is finished in neutral tones with floor to ceiling tiles.

**Building Size** : 71 sqm  
**View** : <https://www.vervproperty.com/sale/act/inner-north/braddon/residential/apartment/6987005>



**Jason Roses**  
02 6176 3476



**Elizabeth Da Pozzo**  
02 6176 3476

