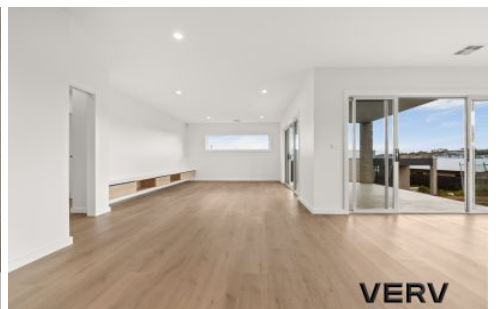


# VERV



## 18 Churcher Crescent Whitlam ACT

4  2  2 

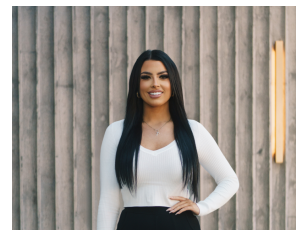
Presented to the market is this outstanding newly built, architecturally designed home within one of Whitlam's most desired locations, directly opposite reserve/parkland. This gorgeous split-level designed home has been constructed to a high standard with well-appointed finishes and designer inclusions throughout. Complete with custom fluted glass front door, polished brick feature wall, engineered timber flooring and double-glazed windows throughout.

Number 18 offers an excellent floorplan with the living areas designed to enjoy a northerly aspect, segregated master bedroom to the front of the home with 2700mm high ceilings, walk-in-robe and designer ensuite, study nook with custom joinery and cabinetry and two generous living areas. The home offers four bedrooms, two designer bathrooms finished with floor to ceiling tiles and double

**Building Size** : 207.39 sqm  
**Land Size** : 561 sqm  
**View** : <https://www.vervproperty.com/sale/act/molonglo-valleyweston-district/whitlam/residential/house/7625654>



**Jason Roses**  
02 6176 3476



**Sharna Sinclair**  
02 6176 3476

