

# VERV



**1/28 Chauvel Street Campbell ACT**

**3 🛏 2 🚿 2 🚗**

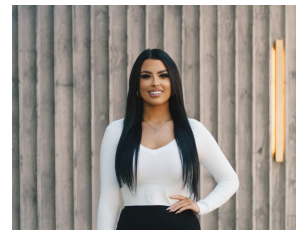
This breathtaking and architecturally designed townhouse is welcomed to the market in the exclusive "Sage" complex in Campbell. Positioned in a premium location directly opposite open green space, this superb north facing townhouse is something truly gorgeous. A superb ambience and elegant sophistication is apparent, as you enter the property you are greeted with high voided ceilings, gorgeous timber floors and a light-colored interior, providing a sense of space and openness.

Number 1 has been carefully designed to offer three generous bedrooms with the master bedroom located on the ground floor with walk-in-robe and designer ensuite finished with custom double vanity. The gorgeous open plan living area is beautiful with high expansive windows and facing north, bathing in natural sunlight throughout the day. The stunning designer kitchen offers 40mm stone

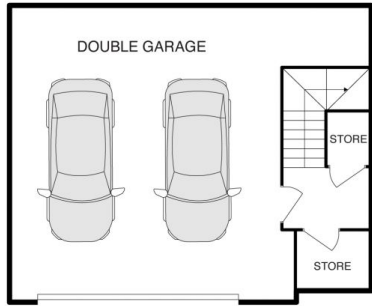
**Land Size** : 194 sqm  
**View** : <https://www.vervproperty.com/sale/act/inner-north/campbell/residential/townhouse/7803615>



**Jason Roses**  
02 6176 3476



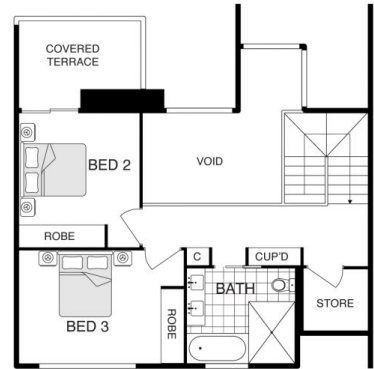
**Sharna Sinclair**  
02 6176 3476



LOWER FLOOR PLAN



GROUND FLOOR PLAN



UPPER FLOOR PLAN

