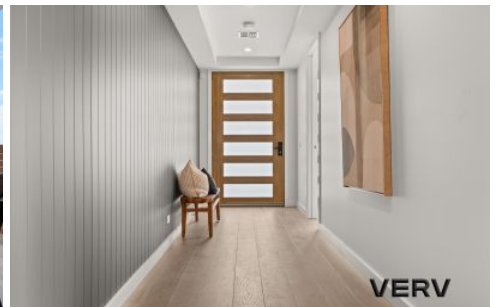


# VERV



17 Arkwookerum Street Whitlam ACT

5 2 2

Directions: Off Hazel Hawke Ave, Whitlam

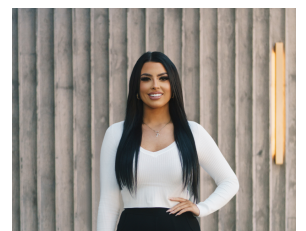
Welcomed to the market is this brand new home, built by one of Canberra's leading, award-winning builders, Blackett Homes; renowned for their quality, having built homes in Canberra for over 40 years. This architecturally striking residence was carefully designed by Solarcert Building Designs, and the interiors meticulously selected by Helen Tadiello from renowned Sugar Designs.

This impressive residence offers a uniquely distinctive mixed-use facade with a high pitch roofline, a photo worthy property from the moment you reach the driveway. The interiors are soft, warm, and welcoming, finished with engineered timber floors, 100% wool carpets and high ceilings to provide a sense of space and comfort year-round. As you walk through the home, one will easily

**Price** : \$1,595,000+  
**Building Size** : 310 sqm  
**Land Size** : 523 sqm  
**View** : <https://www.vervproperty.com/sale/act/molonglo-valleyweston-district/whitlam/residential/house/7827884>



**Jason Roses**  
02 6176 3476



**Sharna Sinclair**  
02 6176 3476

<https://www.vervproperty.com>

