

VERV



22/14 Tattersall Crescent Florey ACT

3  1  2 

Welcome to 22/14 Tattersall Crescent Florey, where charm meets convenience in every corner. This north-facing property, boasting a generous block size of 257m², beckons collectors and homeowners alike with its unique offerings.

Nestled within this inviting abode are three cozy bedrooms, each carpeted and adorned with built-in wardrobes, promising comfort and ample storage space. The single bathroom and separate toilet cater to both functionality and privacy, ensuring convenience for daily living. A separate laundry, complete with side access and a Bosch 8kg washing machine, adds to the practicality of this home.

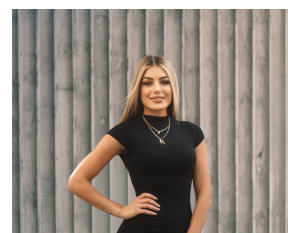
Embrace year-round comfort with reverse cycle air conditioning throughout the residence, featuring a Fujitsu 8.2 kW cooling system and 7.2 kW heating capabilities.

Land Size : 257 sqm

View : <https://www.vervproperty.com/sale/act/belconnen/florey/residential/house/7900972>



Paul Heymel
02 6176 3476



Sienna Lacey
02 6176 3476

