

VERV



Level 1/150 Carruthers Street Curtin ACT

150 Carruthers Street is conveniently situated in the heart of Curtin.

Curtin boasts a central location allowing easy access to the City, Barton & Woden.

Level 1 offers 245sqm* of flexible, open-plan office areas, which promotes collaboration and productivity. An abundance of natural light from masses of windows and vaulted skylights and refreshing views of the leafy streets of Curtin provide an uplifting atmosphere for your office.

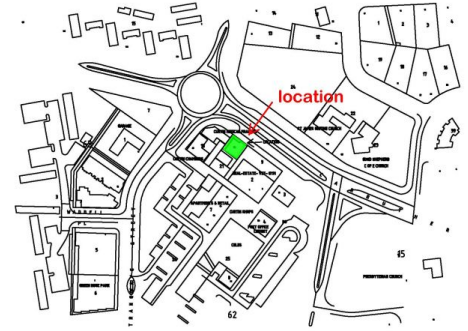
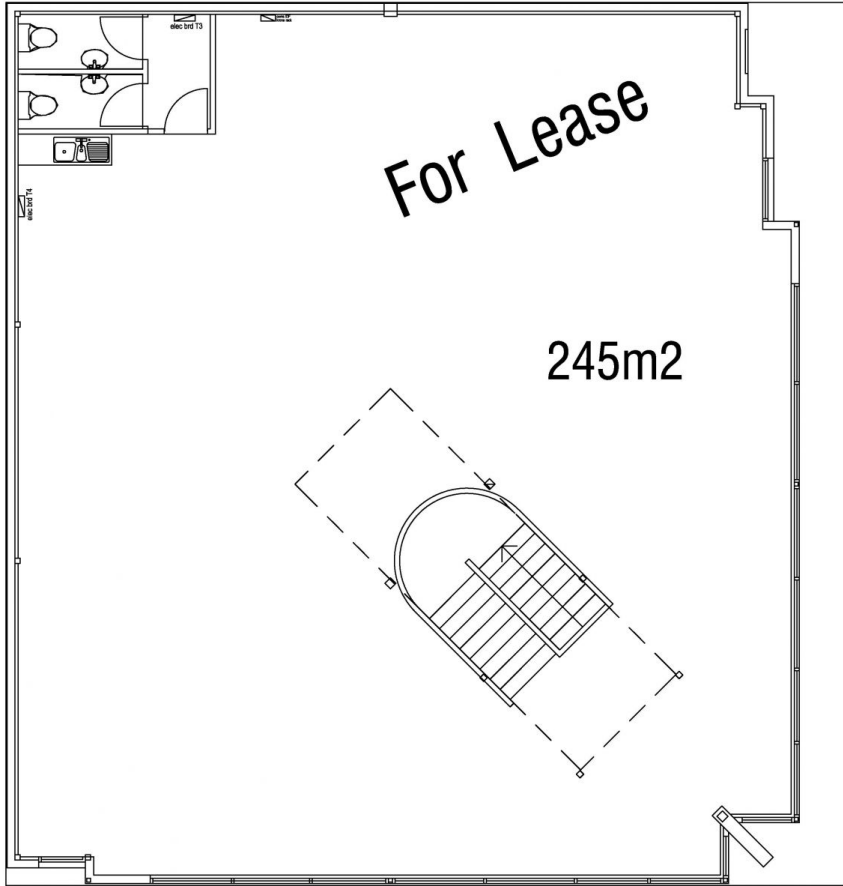
All the modern amenities you'd expect:

- modern carpet, ceiling and lighting
- own kitchenette and washrooms (2)
- own entry and stairwell
- available now

Price : Contact Agent
Building Size : 245 sqm
View : <https://www.vervproperty.com/lease/act/woden-valley/curtin/commercial/offices/7931867>



Natalie Shawcross
02 6176 3476



Locality Plan

LEASE PLAN
level 1 , 150 Carruthers st
Dwg_issue 210204 scale 1:100@A3

