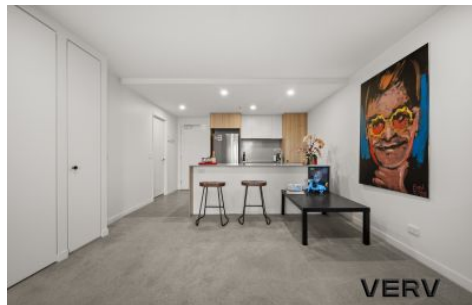


# VERV



VERV






VERV



VERV

## 155/1 Elouera Street Braddon ACT

2  2  2 

Located within the Midnight building is this stunning two-bedroom, two-bathroom apartment. As you step inside, you will find a modern kitchen boasting a sleek quantum quartz island benchtop equipped with top-of-the-line SMEG stainless steel appliances. The bedrooms are generously proportioned, with one featuring mirrored built-in robes and the other offering a walk-in robe, ensuite and your own private access to the balcony.

Conveniently situated amidst bustling cafes, restaurants, and various amenities, the location couldn't be more ideal. Within the complex, residents enjoy access to a 25m lap pool, a fully equipped gym, and a serene reflection pond. Moreover, the Elouera St light rail station is just a stone's throw away, providing effortless connectivity. Whether you're seeking a home for yourself or an investment opportunity, this apartment caters perfectly to your needs.

**Price** : \$680,000 - \$700,000

**View** : <https://www.vervproperty.com/sale/act/inner-north/braddon/residential/apartment/7956228>



**Jason Roses**  
02 6176 3476



**Karen Brill**  
02 6176 3476

