




# VERV



## 13/6 Bon Scott Crescent Moncrieff ACT

3  2  4 

Welcomed to the market is this stunning north-facing double-story townhouse situated in the 'Belford' complex in Moncrieff.

**Price** : \$695,000+

**View** : <https://www.vervproperty.com/sale/act/gungahlin/moncrieff/residential/townhouse/7989243>

Number 13 is a picture-perfect three-bedroom, two-bathroom residence. Located on the ground floor is a modern kitchen with ample storage, light-filled north-facing living and dining space, and a segregated master bedroom with a walk-in robe and ensuite.

Upstairs you will find two bedrooms each featuring built-in robes and expansive windows to flood the rooms with natural light. Additionally, there's a convenient study nook suitable for a home office or relaxation area, along with a bathroom featuring a bathtub.

Located within walking distance of local schools, and

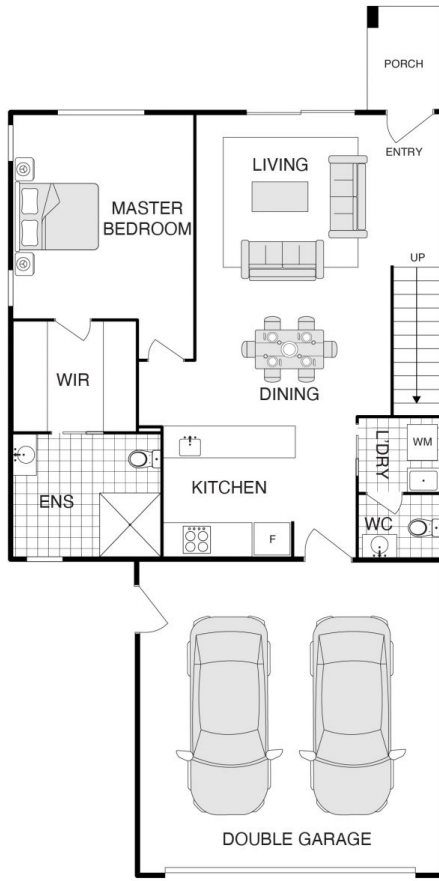


**Jason Roses**  
02 6176 3476

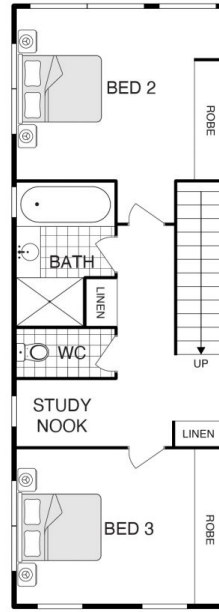


**Brianna Kaleb**  
02 6176 3476

<https://www.vervproperty.com>



GROUND LEVEL



UPPER LEVEL